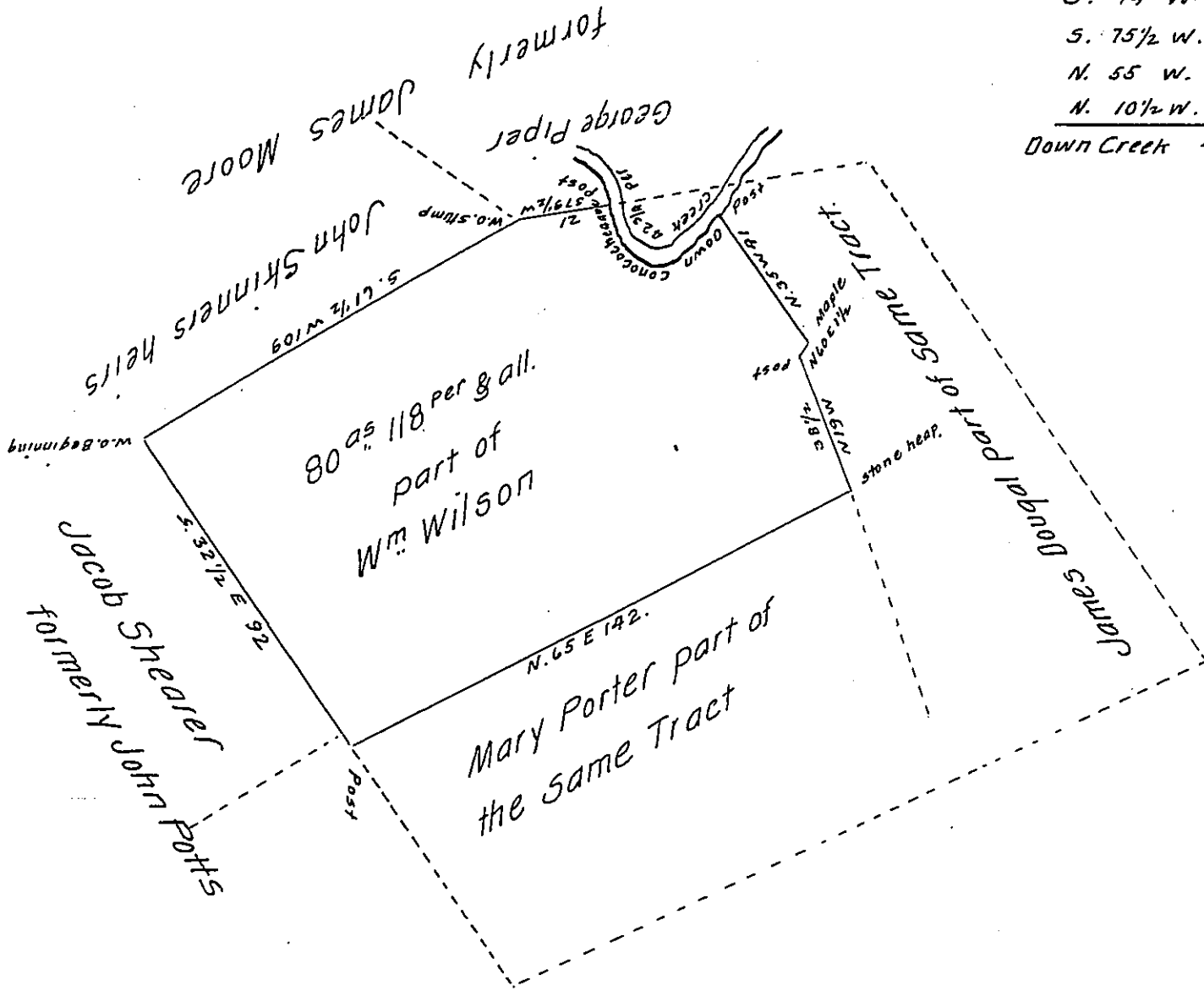


Courses of Creek

- S. 44 W. 15
- S. 75 1/2 W. 8 1/2
- N. 55 W. 7 3/4
- N. 10 1/2 W. 11 1/2

Down Creek 42 3/4 perches.



Draft of part of a Tract of land Situate in Fannet Township Franklin County (formerly Cumberland County) Containing Eighty acres. One hundred & Eighteen perches & Allowance of Six per cent for Roads &c Being part of a larger Tract of 190<sup>as</sup> 56 per & all. Which was Surveyed in pursuance of a Warrant granted to William Wilson Dated the 7<sup>th</sup> of March 1763. Surveyed & laid off the above part for George Piper the 30<sup>th</sup> Aug<sup>r</sup> 1824.

William Hamilton

To Gab<sup>l</sup> Hiester Esq<sup>r</sup>. Su<sup>r</sup>. Gen<sup>l</sup>.

D.S.

IN TESTIMONY that the above is a copy of the original remaining on file in the Department of Internal Affairs of Pennsylvania, made conformably to an Act of Assembly approved the 16th day of February, 1833, I have hereunto set my Hand and caused the Seal of said Department to be affixed at Harrisburg, this seventeenth day of July 1907.

*Henry Howell*  
Secretary of Internal Affairs.